







Project: Multi-Gyn LiquiGel INT	KARO PHARMA
Version: 1 Date: 23-03-2020	
KARO code: BC1221.6 Component type: Leaflet Language: English	
Dimensions (H x W x D): 230 x 150 mm Machine drawing ID: - Material: ?	
Print colours:  Process BLACK	
Onlay:  Cut  Fold	
Extra colours:  For Position ONLY	If this supporting colour is present it means the artwork is still in progress and therefore its content and technical specs are not ready for reproduction. When approved or input is available this colour will be replaced by a print colour.



Multi-Gyn[®] LiquiGel

Multi-Gyn[®]

READ THIS INFORMATION LEAFLET CAREFULLY BEFORE USING MULTI-GYN LIQUIGEL AND KEEP IT FOR REFERENCE

MULTI-GYN LIQUIGEL TREATS AND RELIEVES VAGINAL DRYNESS

- Instantly relieves vaginal dryness
- Protects from irritation during intercourse
- Supplements the natural vaginal moisture
- Based on natural ingredients
- Does not contain hormones

INDICATIONS

Multi-Gyn LiquiGel is ideal for the relief of vaginal dryness. Vaginal dryness can have many causes, including hormonal changes (such as menopause, childbirth or breastfeeding), medication and stress. Multi-Gyn LiquiGel instantly relieves irritations and discomforts related to vaginal dryness. It supplements the natural moisture of the vagina. By supplementing moisture, the gel helps to relieve irritation and protects against vaginal dryness. Multi-Gyn LiquiGel does not affect the vaginal flora and can be used during sexual intercourse to support natural vaginal moisture.

HOW MULTI-GYN LIQUIGEL WORKS

Multi-Gyn LiquiGel is a natural gel based on the patented 2QR-complex. It is a moisturizer that works in a safe and effective way. Multi-Gyn LiquiGel forms an adhesive film over the vaginal walls, to ensure long lasting moisturization and to maintain a healthy vaginal flora. Regular application of Multi-Gyn LiquiGel reduces irritation due to vaginal dryness. Multi-Gyn LiquiGel supplements natural vaginal moisture during sexual intercourse. The formulation is based on natural ingredients, hormone free and gentle.

DIRECTIONS FOR USE

For vaginal dryness apply an ample quantity of Multi-Gyn LiquiGel at least once a day or whenever relief is desired.

If your complaints persist or recur, you should contact your physician. Multi-Gyn LiquiGel should not be used longer than 30 consecutive days. This allows the vaginal flora to regulate itself without support.

For further instructions please read the rest of this leaflet carefully before use.

PLEASE NOTE

You may experience a burning and/or tingling sensation after application. This is normal and the sensation will pass quickly.

MULTI-GYN LIQUIGEL IS BASED ON NATURAL INGREDIENTS

Multi-Gyn LiquiGel is based on the bio-active 2QR-complex. It has no fragrance and is free from hormones and ingredients of animal origin.

MAIN INGREDIENTS

Galactoarabinan Polyglucuronic Acid Crosspolymer*, Glycerin, Betaine, Xanthan Gum

*2QR-complex: patented bio-active polysaccharides www.2QR.com

ALLERGY INFORMATION

Allergies to the ingredients of Multi-Gyn LiquiGel are very rare. If you have doubts, test a small amount on the inside of your arm. If an itchy red spot or patch appears, we advise you not to use Multi-Gyn LiquiGel.

SIDE EFFECTS

Multi-Gyn LiquiGel has no known side effects and is a natural based formulation. Multi-Gyn LiquiGel is not a contraceptive and contains no spermicide. However, influence on the activity of sperm cells has not been researched.

INTERFERENCE WITH MEDICATION

There are no known interference with medication.

PREGNANCY AND LACTATION

There are no known contraindications for the use of Multi-Gyn LiquiGel during pregnancy and while breastfeeding. Discuss the possibilities with your physician.

USE WITH CONDOMS AND PESSARIES

Multi-Gyn LiquiGel should not be used concomitantly with condoms. The effect on pessaries is unknown.

USE WITH TAMPONS AND VAGINAL RINSES

It is recommended not to use Multi-Gyn LiquiGel concomitantly with tampons and vaginal rinses. They may remove (part of) the Multi-Gyn LiquiGel from the vagina and may therefore reduce the effect of the product.

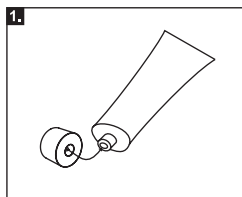
STORAGE

Keep Multi-Gyn LiquiGel between 10°C and 25°C (room temperature). Store Multi-Gyn LiquiGel out of reach of children. Do not use Multi-Gyn LiquiGel after the expiry date

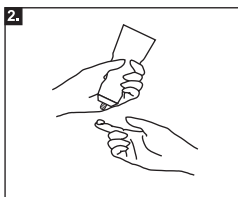
HOW TO USE MULTI-GYN ACTIGEL EXTERNALLY AND INTERNALLY

EXTERNAL APPLICATION

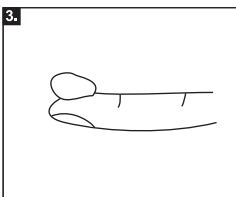
For dryness of the outer intimate area (the vulva) you can apply Multi-Gyn LiquiGel using your finger. Always wash your hands before and after you apply the gel.



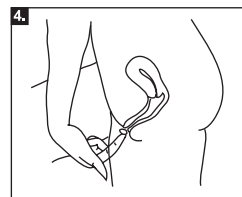
1. Take the cap of the tube. Use the back of the cap to pierce the sealed tube, prior to initial use.



2. Take the tube in one hand and keep the index finger of your other hand close to the tube, as shown in the picture. Squeeze the tube gently. Keep squeezing until you have an ample quantity on your index finger, as shown in the picture.



3. The amount on your index finger should be at least the amount of a fingertip (approx. 2 ml).



4. Apply the gel on the outer intimate area.

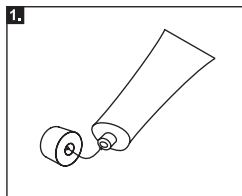
WWW.MULTI-GYN.COM



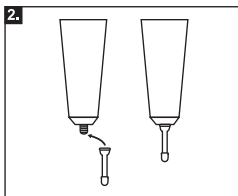
CE 0482

INTERNAL APPLICATION

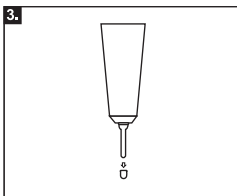
The special applicator can be used. It is included in the box and can be screwed onto the tube. After use you can leave the applicator on the tube, wash it with warm water and then place the cap on the applicator. If you prefer to use your finger; wash your hands and apply at least the amount of a fingertip on the tip of your index finger. Insert your finger into your vagina.



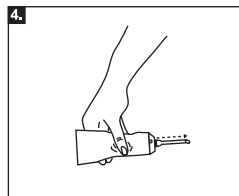
1. Take the cap of the tube. Use the backside of the cap to pierce the seal, prior to initial use.



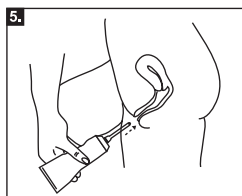
2. Screw the special applicator, which is inside in the box, onto the tube.



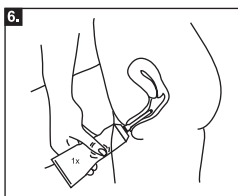
3. Take the small cap off the applicator.



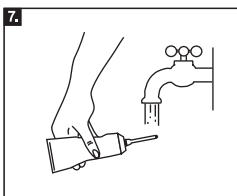
4. Take the tube in one hand and squeeze gently until the gel comes out of the tip of the applicator. When the gel comes out you know that the applicator is full of gel and ready for use. Practice to see how much will come out with a gentle squeeze; you need at least the amount of a fingertip (approx. 2 ml).



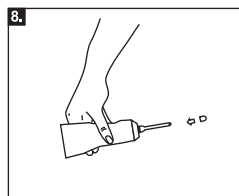
5. Insert the attached applicator into the vagina as the picture shows. To ease the insertion you can apply a little gel on the external intimate skin area. The applicator is smaller than the vagina and it will not damage the cervix (opening of the uterus).



6. Squeeze the tube slightly. You need at least the amount of a fingertip. There is however no limitation and no risk if you apply more.



7. After use you can leave the applicator on the tube and rinse it with warm water.



8. Place the small cap on the applicator.

BACKGROUND INFORMATION

Vaginal irritations and discomforts related to vaginal dryness are common and can occur frequently. Over half of all women, at any stage of life, can be affected. The most common cause is a decrease in natural vaginal fluids due to hormonal changes, such as menopause or during the second half of the menstrual cycle. But there are many other factors that can cause or increase the problem such as the use of certain medications, soap, tampons, stress, fatigue, breastfeeding and childbirth. Many women first notice their vaginal dryness when intercourse becomes uncomfortable, even painful. Intercourse without proper lubrication by your natural fluids or a suitable moisturizing product, such as Multi-Gyn LiquiGel, can cause irritation.

Vaginal dryness can undermine self-confidence and cause a general sense of discomfort which interferes with normal daily life.